

The Kent Range of Metering Products

Product Range Overview

Elster Metering



Domestic cold water meters

V100 Volumetric cold water meters

The V100 is the world's favourite domestic water meter, with over 50 million already in service in over 100 countries. It offers accuracy, long life, low maintenance and tamperproof operation.

- Available in sizes from 15mm to 40mm
- Grooved piston technology minimises risk of meter stoppages
- Can provide management information via optional probe pulse unit upgrade
- Thermoplastic-bodied version available up to 25mm size

V200/V210 Volumetric cold water meters

V200/V210 meters have a host of new design features for enhanced performance and reliability.

- Standard meter covers dual flow range of N1.0/1.5
- 'Second-generation' design improves flow, reduces head loss and maximises accuracy
- Rotating shroud for easier reading
- Grooved piston technology minimises risk of meter stoppages
- Pulse output facility provided as standard



V100 Volumetric cold water meter



V200 Volumetric cold water meter (in-line connection)

V210 Volumetric cold water meter (manifold connection)

Bulk cold water meters

H4000 Woltmann cold water meters

Woltmann water meters are particularly suited to applications with high and sustained flow rates between 0.35 m³/h and 2000 m³/h.

- Available in sizes from 40mm to 300mm
- Excellent linear accuracy

- Can be installed in horizontal, vertical or inclined pipelines
- A strainer should be mounted upstream of all Woltmann meters



H4000 Woltmann cold water meters

S2000 Commercial single jet cold water meters

S2000 meters combine extended low flow, exceeding Class C performance with leakage monitoring capabilities. This makes them ideal for applications with widely varying flow rates ensuring optimum opportunities for revenue collection.

- Available in sizes from 50mm to 100mm
- Metering for flow rates from 90 l/h to 100 m³/h



S2000 Commercial single jet cold water meter

Warm & Hot water meters



S130 Warm water meter



M150 Warm water meter

S130 Warm water meters

Designed for temperatures up to 90°C, this single-jet unit provides accurate metering of permanent flow rates between 1.5 m³/h to 2.5 m³/h. Its balanced hydraulic design gives a wide measuring range with a good low flow performance.

- Pulse output version is available
- Suitable for light industrial and sub-metering applications

M150 Warm water meters

The M150 is a vertical impeller multi-jet meter, for temperatures up to 90°C and permanent flow rates between 1.5 m³/h to 10 m³/h.

- Pulse output version is available
- Suitable for light industrial and sub-metering applications

H4300 Hot water meters

Suitable to temperatures up to 130°C for meter only, the H4300 has permanent flow rate up to 250 m³/h.

- Pulse output version is available



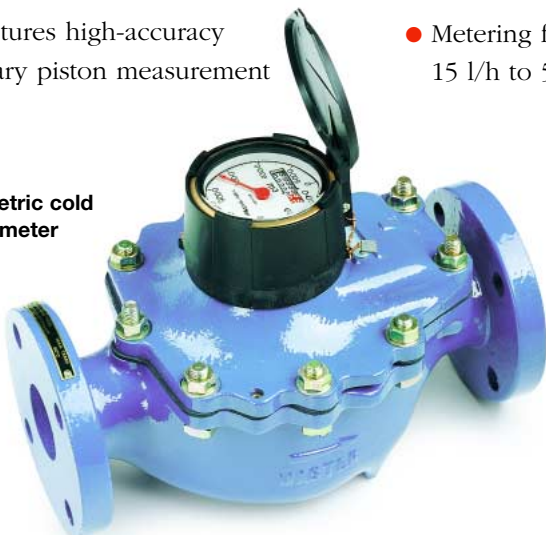
H4300 Hot water meter

V300 Volumetric cold water meters

The V300 is a reliable, accurate volumetric meter that is highly sensitive to low flows.

- Available in sizes from 40mm to 100mm
- Minimum flow rate of just 110 l/h
- Can be installed in horizontal, vertical or inclined pipelines
- Features high-accuracy rotary piston measurement

V300 Volumetric cold water meter



C3200 Combination cold water meters

These units comprise of a Woltmann high capacity meter, coupled to a V100 volumetric meter. They are designed for bulk metering applications where large variations in flow rate are expected.

- Available in sizes from 50/15mm to 150/30mm
- Metering for flow rates from 15 l/h to 568 m³/h



C3200 Combination cold water meter

Meter reading systems

ScanRead is a modular system of electronic water meter reading products that combine reliability, cost-effectiveness and ease-of-use.

They are easy to interface with existing systems and are ideal for utilities where fully automatic meter

reading systems cannot be justified. And with ScanRead, access to buildings is unnecessary, so

costly return visits are eliminated. ScanRead Systems can be tailored from the following modules:

Encoder registers

Designed for use with H3000, V120, V140 and V300 water meters, encoder registers provide encoded systems which can be accessed by Elster's non-contact T450 reader, through an unobtrusive wall-pad or pit-pad located up to 150m away from the register.

T210 ScanCounter

The T210 ScanCounter is designed specifically for accurate counting of water meter pulse outputs. Inexpensive and reliable, T210 ScanCounter provides a cost-effective solution to access problems, as it can be installed wherever it's convenient for meter reading.

T450 Mini-reader

The T450 provides a simple, hand-held 'scan and read' facility, for use on encoder registers and T210 ScanCounter, as well as numeric and alpha-numeric serialised units.



Encoder registers



T450 Mini-reader

Other meter reading products

The ScanRead system also incorporates hand-held readers, field data capture units, application software and connector units that allow multiple meters to be read from a single point.



T210 ScanCounter

Product selector

Domestic cold water meters	Model/Description	Classification	Size	m ³ /h ± 2% Permanent	m ³ /h ± 2% Overload	l/h ± 2% Transitional	l/h ± 5% Minimum	Maximum Temperature °C
	V100	Class C	15	1.5	3	22.5	15	50
			20	2.5	5	37.5	25	50
			25	3.5	7	52.5	35	50
			30	6	12	90	60	50
			40	10	20	150	100	50
	V100	Class D	15	1	2	11.5	7.5	50
			15	1.5	3	17.25	11.25	50
			20	2.5	5	28.75	18.75	50
	V100	Class K	15	2.73	3.5	22.5	15	50
20			2.95	5	37.5	25	50	
25			4.55	7.5	52.5	35	50	
30			6.8	12	90	60	50	
40			10	20	150	100	50	
V110	Class C	15	1.5	3	22.5	15	50	
		20	2.5	5	37.5	25	50	
		25	3.5	7	52.5	35	50	
V200/V210	Class D Dual	-	1.5	3	11.5	7.5	50	
V200/V210	Class C	-	1.5	3	22.5	15	50	
Bulk cold water meters	Model/Description	Classification	Size	m ³ /h ± 2% Permanent	m ³ /h ± 2% Overload	m ³ /h ± 2% Transitional	m ³ /h ± 5% Minimum	Maximum Temperature °C
	H4000	Class B	40	50	90	1	0.35	50
			50	50	90	1	0.35	50
			65	65	120	1.5	0.4	50
			80	120	200	2	0.5	50
			100	180	250	2	0.6	50
			125	180	250	2	0.6	50
			150	450	600	4	1.8	50
			200	700	1000	6	4	50
			250	1000	1600	11	6	50
			300	1500	2000	15	12	50
	Model/Description	Classification	Size	m ³ /h ± 2% Permanent	m ³ /h ± 2% Overload	l/h ± 2% Transitional	l/h ± 5% Minimum	Maximum Temperature °C
	S2000	Class C	50	15	30	225	90	50
			65	20	40	300	120	50
			80	30	60	450	180	50
			100	50	100	750	300	50
	Model/Description	Classification	Size	m ³ /h ± 2% Permanent	m ³ /h ± 2% Overload	Transitional	m ³ /h ± 2% Minimum	Maximum Temperature °C
	V300	-	40	7	16	-	0.11	50
			50	11	30	-	0.18	50
			80	25	60	-	0.27	50
100			36	80	-	0.45	50	
Model/Description	Classification	Size	m ³ /h ± 2% Permanent	m ³ /h ± 2% Overload	Transitional	l/h ± 5% Minimum	Maximum Temperature °C	
C3200	-	50/15	36	45	-	15	50	
		80/20	90	170	-	25	50	
		100/20	170	284	-	25	50	
		150/30	355	568	-	60	50	
Warm/hot water meters	Model/Description	Classification	Size	m ³ /h ± 2% Permanent	m ³ /h ± 2% Overload	l/h ± 2% Transitional	l/h ± 5% Minimum	Maximum Temperature °C
	S130	Class B	15	1.5	3	100	25	90
			20	2.5	5	200	50	90
	M150	Class B	15	1.5	3	120	30	90
			20	2.5	5	200	50	90
			25	3.5	7	280	70	90
			30	6	12	400	100	90
			40	10	20	800	200	90
	Model/Description	Classification	Size	m ³ /h ± 3% Permanent	m ³ /h ± 3% Overload	m ³ /h ± 3% Transitional	m ³ /h ± 5% Minimum	Maximum Temperature °C
	H4300	-	50	15	30	2	1	130*
			65	25	60	3	1.6	130*
			80	40	90	4	2	130*
			100	60	140	6	2.4	130*
			125	100	200	10	3.5	130*
			150	150	300	20	4	130*
200			250	500	20	8	130*	

* meter only

Accurate, reliable, repeatable metering from the world leader

Elster is the world's leading manufacturer of water metering products, with more than 2,500 employees and twenty production centres in five continents.

We are committed to providing innovative products that provide outstanding value and play an important role in helping to manage and conserve water - our most precious resource.

Elster Water Metering – an overview

- Over 20 production centres in five continents
- Over eight million meters produced a year
- Meters for all applications
- Products used in over 100 countries
- Over 100 years of water metering innovation
- All products manufactured to ISO 9001 standard

Pressure equipment directive 97/23/EC

These products are applicable in networks for the supply, distribution and discharge of water and associated equipment and are therefore exempt.



Elster Metering Limited
Pondwicks Road
Luton, Bedfordshire
LU1 3LJ, United Kingdom
Telephone +44 (0)1582 402020
Facsimile +44 (0)1582 438051
Website: www.elstermetering.com
E-mail: water.metering@gb.elster.com